



**The Community and Children's Resource Board
of St. Charles County**

**Serving Children and Youth of St. Charles County and their Families
through the St. Charles County Children's Service Fund**

*2011 Annual Report
to the St. Charles Community*



Our mission is to maximize community resources to build and sustain a comprehensive system of services for children and families in need. Services are provided through our funding partnerships with area agencies working with children and youth in their homes, schools, and community settings.

Dear St. Charles County Residents,

2011 marked the sixth year of services provided to St. Charles County residents through the Children's Services Fund. Since services began in Fall 2005, the following reflects the number of children, youth, and families who have received services through area agencies:

1. Temporary shelter and related services - 6,121 youth received temporary shelter and related services (counseling, hotline, and Safe Place).
2. Outpatient substance abuse treatment - 1,552 children and youth were involved in treatment services.
3. Transitional living - 99 youth were involved in transitional living services.
4. Home-based family intervention - 11,234 children and youth and their families participated in home and community-based services provided in school, home, and community settings.
5. School-based prevention - 308,796 children and youth participated in a variety of school-based programs that teach skills related to bullying, sexual abuse, substance abuse, and suicide prevention.
6. Outpatient psychiatric - 380 children and youth were provided outpatient psychiatric services.
7. Crisis intervention - 202 children and youth received crisis intervention services through school settings.
8. Respite services - 3,966 babies, children, and youth were provided respite services that reduce the risk of child abuse and neglect.
9. Counseling services - 2,967 children and youth participated in counseling services for problems related to grief, anger, behavioral problems, family conflict and other areas.
10. Services to teen mothers/parents - 908 teen mothers/parents were provided services related to infant care, parenting, and counseling.

Additionally, 81,378 parents and professionals in the community participated in trainings related to sexual abuse prevention, anti-bullying, and mental-health and substance-abuse treatment services.

In 2011, we contracted with 20 partner agencies who are making significant contributions to the health, well-being and welfare of children and youth in our community. We believe that through the partnerships we have formed with area agencies, the CCRB is fulfilling its commitment to our children and youth and fulfilling the CCRB Vision - "Preparing All Youth and Families to Realize a Brighter Tomorrow."

Sincerely,

Ron Berrey, Ed.D.
Chairman of the Board

Bruce Sowatsky
Executive Director

2011 CCRB Board of Directors

Ron Berrey, Board Chairman
Valerie White, Vice Chair
Dan Kuntz, Treasurer

Kevin Cantwell
Chuck Gross
Betty Kramer
Frank Martinez
Steven Stahl
Art Wash

CCRB Staff

Bruce Sowatsky
Executive Director

Jan Lewien
Grants Administrator

Michelle McElfresh
Administrative Assistant
Coordinator, Shower of Love

About the Community and Children's Resource Board (CCRB)

Our agency was formed in 1997 when a new Board of Directors replaced the St. Charles County Community Mental Health Board of Trustees. The Resource Board was created by the St. Charles County Council by County Ordinance 97-152. Board members are appointed by the County Executive, with approval by the St. Charles County Council. The Board's purpose is to oversee the administration, allocation, and distribution of funds authorized through the passage of Proposition 1 in November 2004, which established the Community Children's Services Fund for the purpose of providing funding to establish, operate, and maintain community mental health services for children, youth, and their families.

St. Charles County stands as a leader in the passage of the Putting Kids First initiatives. Other regional communities have also designed and successfully led campaigns to develop Community Children's Services Funds including Franklin, Jefferson, Lincoln, and St. Louis Counties in addition to the City of St. Louis. Through increased funding for children, youth, and their families, the above-listed communities are realizing positive results in areas related to school performance, decreased child abuse reports, improved behavioral concerns, reduced substance abuse, and improved overall mental health.

Service Areas: The CCRB funds agencies providing the following services to children and youth residing in St. Charles County.

- Temporary shelter
- Outpatient substance abuse treatment
- Transitional living services
- Home-based family intervention services
- School-based prevention services
- Outpatient psychiatric services
- Crisis intervention
- Respite services
- Counseling services
- Services to teen mothers/parents



AGENCY VALUES

Collaboration: We encourage collaboration and integration of services that are effective, efficient and continually improved.

Family Voice: We believe that children and families in need of services will have a voice and are partners in the planning of service delivery.

Accountability: The CCRB will develop accountable service delivery systems that are responsive to the community.

Strength-Based: We encourage our partner agencies to be strength-based in their approach to providing services to children, youth, and their families.

Information on CCRB Funded Agencies

1. **Bridgeway Behavioral Health** - Works with youth needing outpatient substance abuse treatment. (Partner since 2005)
 2. **Catholic Family Services** - Provider of psychiatry, counseling, crisis intervention, and school-based prevention education programs. (Partner since 2005)
 3. **The Child Center** - Sexual abuse prevention services are offered to children, youth, parents, and professionals in school settings. (Partner since 2005)
 4. **Children's Home Society** - Respite services are available for children with mental health and developmental challenges. (Partner since 2006)
 5. **Community Living, Inc.** - Center-based respite services in O'Fallon are provided for children with developmental issues coupled with a mental health diagnosis. (Partner since 2006)
 6. **Crider Health Center** - Crider provides school-based prevention services, home and community based, and psychiatric treatment to children and youth with mental illness. (Partner since 2005)
 7. **Eleventh Circuit Family Court** - Parent-reunification services are offered through the court system and delivered by professionals from Youth In Need. (Partner since 2009)
 8. **F.A.C.T. (Family Advocacy and Community Training)** - This organization provides parent partner services for families with children with a serious emotional disorder. (Partner since 2005)
 9. **Kids In The Middle** - The program provides counseling for children and youth with divorce/separation issues. (Partner since 2010)
 10. **KUTO (Kids Under Twenty One)** - Suicide prevention educational workshops in two schools districts in St. Charles County. (Partner since 2011)
 11. **Lutheran Family & Children's Services** - Professional counseling is provided to children and youth, and group counseling is offered through a St. Charles City school. (Partner since 2005)
 12. **National Alliance on Mental Illness** - Parent and caregiver educational workshops and community presentations on mental illness. (Partner since 2010)
 13. **Nurses for Newborns** - The program works with teen parents/new moms to provide infant care and parent training and assistance. (Partner since 2011)
 14. **Our Lady's Inn** - They provide residential care to unwed mothers and their children through a two-year program including aftercare supports. (Partner since 2007)
 15. **Preferred Family Healthcare** - Programs include outpatient substance abuse treatment and school-based prevention services that include counseling at-risk youth. (Partner since 2005)
 16. **Salvation Army** - Parents and children in homeless situations receive counseling services, including parents who are in the process of reunification with children. (Partner since 2007)
 17. **Sts. Joachim and Ann Care Service** - The program works with homeless and near homeless families to support the needs of children and youth. (Partner since 2007)
 18. **St. Louis Crisis Nursery** - Programs in three locations provide respite services for families of children under the age of 12. (Partner since 2005)
 19. **United Services, Inc.** - Receives funding for behavioral intervention classrooms for children with autism. (Partner since 2008)
 20. **Youth In Need** - Youth In Need provides programs in counseling, teen parent services, temporary shelter, and transitional living for youth from ages 11 to 19. (Partner since 2005)
- Note: The above listed agencies received funding for 2011. For 2012, CCRB will add three new agencies to include the Foster and Adoptive Care Coalition, working with children and families of children in foster care; Behavioral Health Response (BHR), providing crisis intervention services; and ThriVe St. Louis, Inc, which will be providing school-based prevention services.*

Fiscal Year 2011 Children's Services Fund Distribution

(January 1 - December 31, 2011)

| <u>Agency Name</u> | <u>Support/Services Area</u> | <u>FY 2011 Expenditures</u> |
|---|---|-----------------------------|
| Bridgeway Behavioral Health | Bridges to Success/Substance Abuse Treatment | \$ 224,211.25 |
| Catholic Family Services | School-Based Prevention | 5,644.48 |
| | Psychiatry Services | 8,768.08 |
| | Counseling Services | 33,074.00 |
| | Crisis Intervention Services | 18,019.99* |
| The Child Center | Sexual Abuse Prevention/ School-based Prevention Services | 286,626.39 |
| Children's Home Society | Respite Services | 22,302.00 |
| Community Living, Inc. | Out of Home Respite Care/Respite Services | 44,652.15 |
| Crider Health Center | Partnership with Families/Home and Community Based Services | 985,718.26 |
| | Mental Health Specialists/Home and Community Based Services | 719,913.50* |
| | Psychiatry | 22,208.40 |
| | Violence Prevention/School Based Prevention | 156,439.00 |
| | Pinocchio/Individual, Group, and Family Counseling | 86,386.00 |
| Crisis Nursery-St. Charles and Wentzville | Respite Services | 407,449.16 |
| | Family Empowerment/Home and Community Based Services | 91,497.92 |
| Eleventh Circuit Court, St. Charles | Therapeutic Supervised Visitation/Individual, Group, and Family Counseling | 35,025.00 |
| Kids In The Middle | Counseling Services/Individual, Group, and Family Counseling | 51,491.95 |
| Kids Under Twenty-One (KUTO) | Suicide Prevention Education/School-Based Prevention | 20,850.00 |
| Lutheran Family and Children's Services | MET (Multimodal Emotion-focused Treatment)/ Individual, Group, and Family Counseling | 46,351.79* |
| National Alliance on Mental Illness (NAMI) | Community-Based Mental Health Advocacy and Education/Home and Community Based Services | 16,913.91 |
| Nurses for Newborns | Nurses for Newborns Foundation/Home and Community Based Services | 21,183.40 |
| Our Lady's Inn | Family Strengths Program/Services for Teen Mothers/Parents | 53,000.00 |

| <u>Agency Name</u> | <u>Support/Services Area</u> | <u>FY 2011 Expenditures</u> |
|---|--|-----------------------------|
| Preferred Family Healthcare | Wentzville Outpatient Program/Substance Abuse Treatment | \$ 559,317.44 |
| | Team of Concern/School-Based Prevention Services | 447,272.93* |
| Saints Joachim and Ann Care Services | Children and Youth Support/Home and Community Based Services | 178,092.00 |
| Salvation Army | Counseling Program/Individual, Group, and Family Counseling | 1,500.00 |
| United Services, Inc. | Intensive Behavioral Intervention Classrooms/ Home and Community Based Services | 87,978.04 |
| Youth In Need | Teen Parent/Services for Teen Moms and Parents | 141,478.00 |
| | Transitional Living Services | 154,326.00 |
| | Individual, Group and Family Counseling | 187,340.00 |
| | Temporary Shelter Services | 216,812.00 |
| SUBTOTAL | | \$5,331,843.04 |

* Supplemental Funds were approved for Catholic Family Services (Crisis Intervention Services for \$8,484.20), Crider Health Center (Respite Services for \$6,000.00), Lutheran Family and Children's Services (Counseling for \$8,000.00), and Preferred Family Healthcare (Prevention Services for \$4,798.00) due to increased demand for services.

| | | |
|---------------------------------|--|-----------------------|
| CCRB OPERATIONS | Administration (Administration, Accounting Services, Survey, Miscellaneous) | 301,558.58 |
| GRAND TOTAL EXPENDITURES | | \$5,633,401.62 |

Statement of Revenues and Expenditures - Year Ended 2011

REVENUES

| | |
|-----------------------|-----------------------|
| Taxes | \$5,722,496.50 |
| Investment Income | 21,014.20 |
| Fundraising | 6,224.03 |
| Miscellaneous | 37,605.00 |
| (Refund of Taxes-TIF) | (159,030.37) |
| TOTAL REVENUES | \$5,628,309.36 |

EXPENSES

| | |
|--|-----------------------|
| Administration | \$ 264,098.01 |
| Accounting Services | 9,600.00 |
| Survey | 21,950.00 |
| Show of Love Disbursements to Agencies | 5,910.57 |
| Service Contracts | 5,331,843.04 |
| TOTAL EXPENSES | \$5,633,401.62 |

Excess of Revenues (Over)/Under Expenditures/Change in Net Assets

| | |
|--|-----------------------|
| Fund Balance/Net Assets-Beginning of Year | \$2,393,475.17 |
| Fund Balance/Net Assets-End of Year | \$2,402,406.90 |

**Statement of Net Assets Balance Sheet
Year Ended 2011**

| Assets | | Liabilities | |
|-------------------------------------|-----------------------|--|-----------------------|
| Checking Account | \$ 164,918.45 | Accounts Payable | \$ 295,373.08 |
| Services Fund | 1,326,191.58 | FED/FICA Payable | 4,621.91 |
| Interest Receivable | 2,740.52 | Total Liabilities: | \$ 299,994.99 |
| Sales Tax Receivable | 905,101.45 | Fund Balance of other Equities | |
| Capital Assets, net of depreciation | 2,069.90 | Net Investment in Fixed Assets | 2,069.90 |
| Deposit | 1,385.00 | Excess of Revenues Over (Under) Expenses | 2,100,342.01 |
| | | Total Fund Balance and other Equities | \$2,102,411.91 |
| Total Assets: | \$2,402,406.90 | Total Liabilities, Fund Balance and Other Equities: | \$2,402,406.90 |

Total Number of Children and Youth in 2011 Receiving Services through the Children’s Services Fund by Service Area:

| | |
|-------------------------------------|---------------|
| • Shelter Services | 529 |
| • Respite Services | 492 |
| • Teenage Parents | 283 |
| • Substance Abuse Treatment | 419 |
| • Psychiatric Services | 58 |
| • Transitional Living Services | 12 |
| • Crisis Interventions | 96 |
| • School-based Prevention | 73,500 |
| • Home and Community-based Services | 2,336 |
| • Counseling Services | 737 |
| TOTAL | 78,462 |

Accomplishments ~

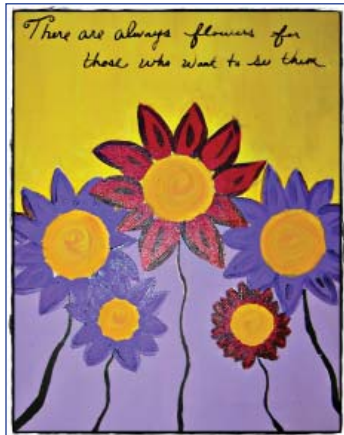
The fifth annual *Shower of Love*, an event to benefit teen moms and their babies, was held on April 28 and 30 at participating Dierbergs, Schnucks, Shop ‘n Save, Mid Towne IGA and Walmarts throughout St. Charles County. Over 300 volunteers collected much-needed baby items that were donated to six area nonprofit agencies: Crisis Nursery, Mary Queen of Angels, Youth In Need, Our Lady’s Inn, Nurses for Newborns, and Birthright. A number of area nonprofits and businesses and corporations also hosted month-long collection drives and held baby showers to help with this effort. A total of \$61,000 in cash and in-kind items was received bringing the five year total for this event to over \$282,000 raised for young moms and their babies.



CCRB conducted a *Satisfaction Survey* on all direct client service programs funded through the Children’s Fund. Sixteen agencies providing 26 programs were evaluated and the results gave high marks in overall satisfaction in services provided to children, youth, and parents indicated they would use the service again in the future, if necessary. Program analysis showed that many services are making major impacts on home and school life, including behavior, grades, and/or attendance at school.



2440 Executive Drive, Suite 214
St. Charles, MO 63303
636-939-6200 636-939-2223
Fax: 636-939-6202
www.stcharlescountykids.org



Photos and Artwork used in the 2011 Annual Report
have been supplied by Crisis Nursery-St. Charles
and Preferred Family Healthcare