

CCRB Welcomes Two New Agencies Into the Fold

In December, the CCRB announced the funding of two new agencies to serve children in St. Charles County: Kids in the Middle (KITM) and the National Alliance for the Mentally Ill (NAMI). While both of these agencies have been serving the St. Louis region and St. Charles residents for a long time, they had not established a location within St. Charles County until now. These services will fill several gaps that exist within the service delivery system of our community.

Kids in the Middle will be joining St. Joachim and Ann Care Services at their new Tri-County Community Outreach Center, and will provide individual, family and group counseling for children whose parents are divorced or are going through a divorce. While numerous churches have offered services to divorced adults, we have never had on-going services for youth suffering from the effects of divorce. Now, families can access these highly effective services near home without having to travel into Kirkwood. For further information or referrals, contact Judy Berkowitz at 314-909-9922.

NAMI has been providing information and support groups in St. Charles County at local churches, but with new funding, they will be able to operate an office, offer additional support groups, and man a helpline for parents. Recognized as an expert in the field of mental illness, NAMI helps parents by answering questions about various diagnoses and helps to reduce the stigma often associated with mental illness. While NAMI in the process of setting up their office, they can be reached by calling Joyce Johnston at 314-962-4670.

In addition to new agency funding, the CCRB expanded allocations to currently funded agencies to include a new mentoring service to augment Bridgeway Behavioral Health's adolescent substance abuse treatment regimen and the addition of a Behavioral Specialist to United Services' Intensive Behavioral Intervention Classrooms (IBIC) for autistic children.

Frank and Charline Martinez Honored at Celebration of Youth Gala

CCRB Board Member Frank Martinez and his wife, Charline, were honored as two of Youth In Need's 2010 Celebration of Youth honorees at their gala event on March 20, 2010. Over the years, Frank and Charline's passion for children and volunteering have benefited thousands of St. Charles County youth.

Frank has served on non-profit boards in St. Charles County including Youth In Need. He has volunteered for many organizations including Crider Health Center, FISH, the Salvation Army, St. Joachim and Ann Care Services, the March of Dimes and the Community Council. Frank is the CCRB committee chairman for the Children's Trust Fund, which funds prevention programs for children.



The couple's involvement with Youth In Need began when Frank volunteered as "Mr Fix It" in the shelter's homes. In 1992, Frank and Charline pledged to purchase a home to help the agency secure a federal grant to begin its Transitional Living Program (TLP), which provides comprehensive services to homeless youth. In 2000, Frank and Charline donated the TLP house to Youth In Need. In 2008 the agency named the TLP house in honor of Frank and Charline and their continued contributions to children's services. Congratulations to Frank and Charline for this well-deserved honor!

2010 Children's Trust Fund Awards

Seven St. Charles County based organizations were recipients of 2010 Children's Trust Fund grant awards, designated for programs that support child abuse and neglect prevention. These organizations include: *Our Lady's Inn*, \$5,500 for aftercare services for new mothers leaving the shelter; *St. Charles County Department of Community Health & Environment*, \$4,100 for car seats for a Parenting 101 program; *Youth In Need*, \$4,000 for Head Start/Early Head Start programs; *Crider Health Center*, \$2,500 for wraparound supports; *Crisis Nursery*, \$2,500 for respite services; *Lutheran Family & Children's Services*, \$1,500 for young mothers services; and *Bridgeway Behavioral Health*, \$600 for equipment for the Children's Program.



2009 Results from Services

2009 CCRB partner agencies provided services to 62,597 St. Charles County children and youth and 17,763 parents and professionals. Seventeen partner agencies reported an increase in utilization rates from 90% in 2008 to 97% by the end of December 2009. "The 97% utilization rate indicates that there has been a greater request for services than what we anticipated at the beginning of the school year. We believe that today's current economic challenges have increased needs within our community's families, and that in effect, is showing up in problems that plague our youth," said Bruce Sowatsky, CCRB executive director.

Clinical goal achievements were at 83% with families facing more severe problems related to economic difficulties and loss of employment, increased risks of homelessness, mental illness and job insecurity. "We work closely with our partner agencies to help them reach their clinical goals," said Sowatsky. The high demand for services in 2009 caused our Board to offer supplemental funds during the last quarter of the year to allow for the continuation of needed services for our youth."

PARTNER AGENCY NEWS.....

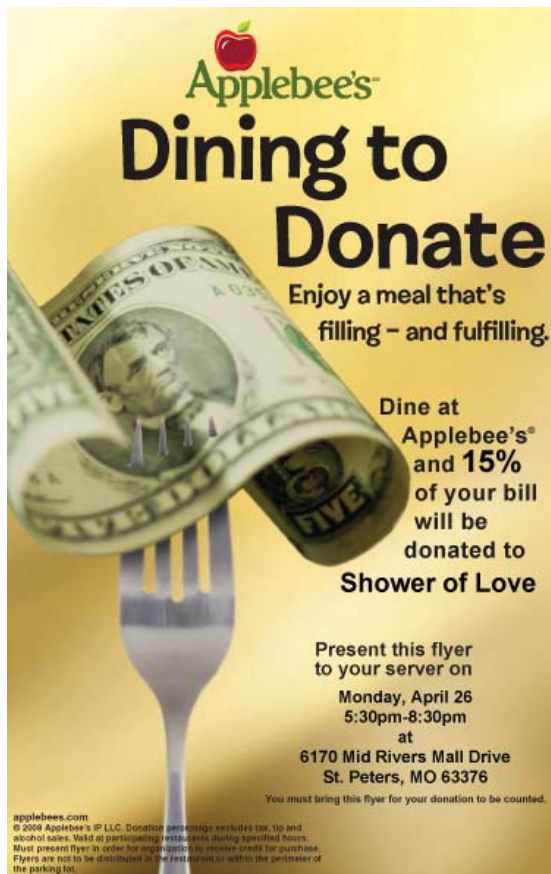
Crider Health Center's new Wentzville facility will be opening in July 2010! The new facility will enable Crider to serve an additional 6,500 patients each year and will incorporate primary health care, pediatrics, behavioral health, ob/gyn, lab, dental and a pharmacy for the underserved in St. Charles and surrounding counties.

Kateri Chapman-Kramer has been named the site director for the Children's Home Society's St. Charles location (Muegge Road). She had previously served the agency as the Individual Program Service Coordinator.

The Saint Louis Crisis Nursery is pleased to present, "Sustaining the Passion: Caring for Children and their Families in Tough Times." Nationally recognized, Dr. Terry Cooper will speak about the importance of knowing your own struggles before trying to help others in order to be the healthiest professional for a lifetime career in the helping field! He is joined by Tena Thompson, Director of the St. Louis City Children's Division. Cost for the event is \$10. Please email Katie Corrigan at katie@crisisnurserykids.org for registration information.

Youth In Need's Project Safe Place celebrated National Safe Place Week from March 14-20th. The week highlighted the Safe Place Program, which brings businesses and volunteers together to provide help and safety to children and teens facing abuse, neglect or serious family problems. As part of the week's activities, YIN sponsored a poster contest. Congratulations to Jennifer Evans, Elena Estrada and Barbara Jean Palmer for their winning designs, which will be used throughout the year to promote Safe Place in St. Charles County.

The Family Support Services' Summer Camp 2010 will be June 7-August 6. Join FSS for Destination Vacation as they embark on an adventure full of themed weeks, field trips, cooking activities, crafts, science experiments, Six Flags, Cardinals baseball, a carnival and much more. Contact Jen Spellazza @ 636-614-1302 for more information.



FOURTH ANNUAL SHOWER OF LOVE

Plans are underway for the 4th annual Shower of Love to benefit teen moms and babies in St. Charles, and we need your help to make this year's event a success! The Shower of Love is a St. Charles Countywide collection drive for baby-care items to benefit teen moms and babies being served by Crisis Nursery, Mary Queen of Angels, Our Lady's Inn and Youth in Need. Over the past three years over \$140,000 has been donated including approximately 90,000 diapers, 70,000 wipes and thousands of other essential baby care items.



During the month of April, churches, businesses and individuals are needed to host collection drives or baby showers. A coordinator's kit with flyers and tips on hosting a collection drive is available by contacting the CCRB. Further, residents are invited to attend a community baby shower at Fairwinds-River's Edge on April 14, from 1:00 to 3:00 to benefit the Shower of Love. Residents can drop off their donation during the month of April at a community collection site. These include Fairwinds-River's Edge, New Frontier banks, Southwest banks and Sanford Brown College. Applebees in St. Peters is hosting a Dining to Donate (see insert) event on April 26 from 5:30 to 8:30 p.m. to raise funds for the Shower so be sure and contact Michelle to get the flyer you need in order for your donation to be counted.

On Thursday, May 6 volunteers are needed to collect baby-care items from residents at participating Dierbergs, Schnucks, Shop 'n Saves, Mid Towne IGA and Walmart. Volunteers will be at collection sites from 9:00 a.m. to 7:00 p.m. For more information, please contact Michelle McElfresh at 636.939.6200 or mamcelfresh@sbcglobal.net or visit www.freewebs.com/showeroflove.

Board Member Appointed

Kevin Cantwell has been appointed by the St. Charles County Council to serve on the CCRB and will fill the vacant position formerly held by Julie Eckstein. This appointment will expire in October 2010.

Mr. Cantwell is the president of the Big River Telephone Company and is active in several organizations in St. Charles County, including the St. Charles County Athletic Association, State Show Me Games and the Ronald McDonald House. He is active with St. Joseph Catholic Church and holds a masters degree in business from Lindenwood University.



NOTES FROM EXECUTIVE DIRECTOR

I recently spoke to the National Network 4 Youth in Washington D.C. as agencies in other states are interested in replicating what we have accomplished in St. Charles County and the St. Louis region. With the passage of similar measures in St. Louis and Franklin counties in 2008, we have expanded children's mental health services in our community by \$55 million annually. Yet, as impressive as that figure is, I was more impressed by the impact our funding has had on the youth.



Bruce Sowatsky, Executive Director

As I researched our results over the past 4 ½ years, I discovered some very impressive outcomes. Since 2005, we have had a 23% drop in the number of children with substantiated child abuse; we have had a 4.9% drop in teenage pregnancy with over 94% of the births being healthy and over 90% of the mothers staying in school; we have seen a 24.7% drop in teenage runaways and a 23.7% decrease in delinquency offenses; and we have seen an average increase of 1.5% in the graduation rates of our five public high schools. What is even more amazing is that these results have occurred while our population has grown 23% and we would have expected statistics to be worse.

Thanks to the strategic vision of the CCRB Board of Directors services are funded that address these concerns and thanks to the front line staff of our partnering agencies who work with the families. Their work and investment in our county's youth are paying dividends. We appreciate and thank you for your dedication and compassion.

CCRB BOARD OF DIRECTORS

Ron Berrey, Ed.D.
 Chairperson
 Valerie White
 Vice-Chair
 Dan Kuntz
 Treasurer
 Kevin Cantwell
 Chuck Gross
 Betty Kramer
 Gil Lauer
 Frank Martinez
 Arthur Wash

Staff:

Bruce Sowatsky
 Executive Director
 Janet Lewien
 Grants Administrator
 Michelle McElfresh
 Administrative Assistant

2440 Executive Drive #214
 St. Charles, MO 63303
 Phone: 636-939-6200
 Fax: 636-939-6202
www.stcharlescountykids.org

CCRB FUNDED AGENCIES

Bridgeway Behavioral Health.....	636.757.2300
Catholic Family Services.....	636.498.2273
Child Center.....	636.332.0899
Children's Home Society.....	636.940.1119
Crider Health Center.....	636.332.6000
Crisis Nursery-St. Charles/Wentzville.....	636.947-0600
	636-887-3070
Electus Academy.....	636.922.5191
Eleventh Circuit Family Court	636.949.3040
F.A.C.T.....	636.949.2425
Family Support Services.....	636.949.2546
Kids in the Middle.....	314.909.9922
Lutheran Family & Children's.....	314.787.5100
Services	
Mary Queen of Angels.....	636.379.5070
NAMI	314.962.4670
Our Ladies Inn.....	636.398.5375
Preferred Family Healthcare.....	636.946.6376
Saints Joachim and Ann.....	636.441.1302
Care Service	
Salvation Army.....	636.240.4969
United Services.....	636.926.2700
Youth In Need	636.946.5600